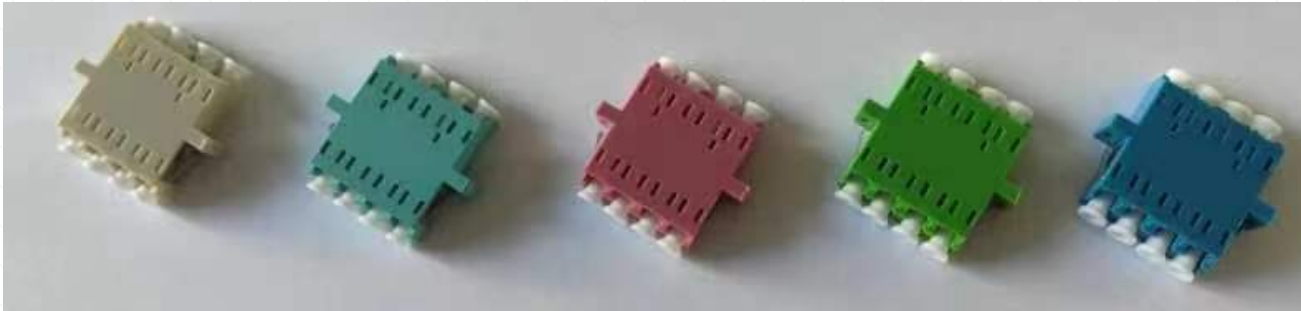


## LC Quad Fiber Optic Adapter with Flange



### Overview

A fiber optic adapter, sometimes also called a coupler, is a small device designed to terminate or link the fiber optic cables or fiber optic connectors between two fiber optic lines.

By linking two connectors precisely, fiber optic adapters allow the light sources to be transmitted at most and lower the loss as much as possible. At the same time, fiber optic adapters have the merits of low insertion loss, good interchangeability and reproducibility.

### Benefits

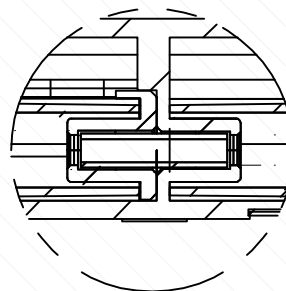
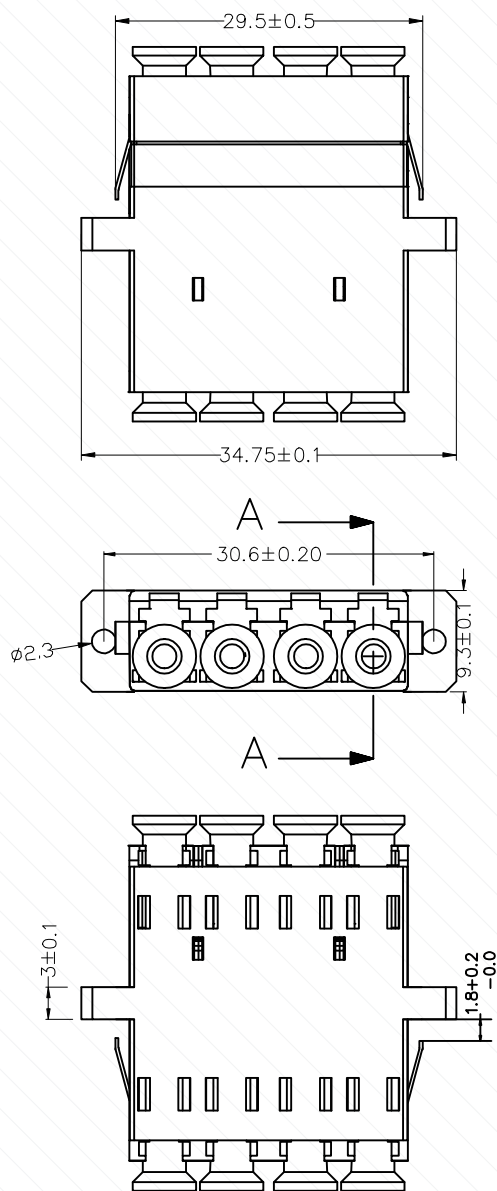
- $\leq 0.2\text{dB}$  (Typical) Low Insertion Loss
- Color Coded for Rapid Fiber Management
- 4x Dust Cap Keeps Adapter's Interior Clean from Dust
- Stainless Steel Clips for Tool-less Snap-in Installation
- Available in A Variety of Connector Types
- Can be Used with M2 Model Screw

### Product Specification

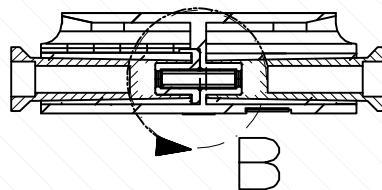
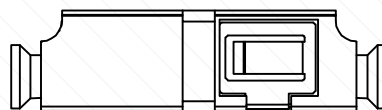
Specification	LC Quad Fiber Optic Adapter with Flange			
Connector Type	LC-LC	LC-LC	LC-LC	LC-LC
Fiber Mode	OS2	OS2	OM3	OM4
Polish Type	APC	UPC	UPC	UPC
Color	Green	Blue	Aqua	Violet
Body Style	Quad	Quad	Quad	Quad
Insertion Loss	$\leq 0.2\text{dB}$	$\leq 0.2\text{dB}$	$\leq 0.2\text{dB}$	$\leq 0.2\text{dB}$
Operating Temperature	-40 to + 85°C	-40 to + 85°C	-40 to + 85°C	-40 to + 85°C
Durability	1000 times	1000 times	1000 times	1000 times
Material	PEI	PEI	PEI	PEI

Specification

Product Drawing



DETAIL B  
SCALE  $\frac{2}{1}$



SECTION A-A