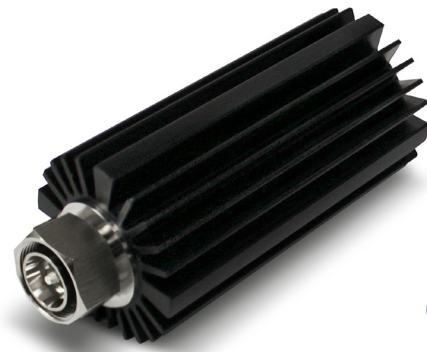


- ◆ Very Low PIM
- ◆ 25W average power
- ◆ Low VSWR
- ◆ Convenient Size
- ◆ Intimate cable contact
- ◆ RoHS compliant
- ◆ Suitable for outdoor environments



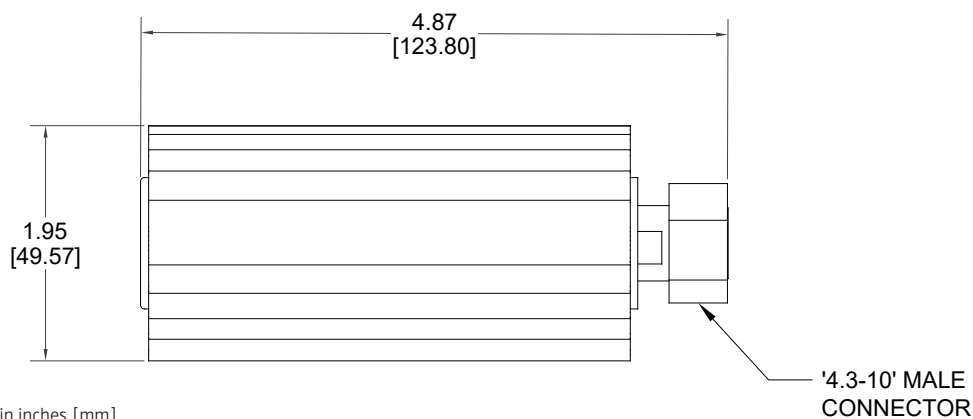
Microlab TK-225 Series Cable Loads are ideal for Small Cell wireless applications, when extremely low PIM, Passive Intermodulation, is required. A typical application is small cell radio combining solution. This cable load termination can be used with Microlab's 2x2, 3x3, and 4x4 hybrid combiners to provide superior low PIM performance.

Units are black anodized for outdoor applications.

Power*	Model Number and Connector	
Avg CW	4.3-10(m)	7-16(m)
25 W	TK-225ME	TK-225MD

\*Derate Average Power by -1.5%/°C above 55°C ambient.  
†Complies with IEC60950 90°C Heat Sink Touch temperature with adequate air circulation.

Frequency:	400 - 2700 MHz
VSWR:	<1.20:1 min., 1.10:1 typ.
PIM:	-161 dBc, with 2x 1900 MHz tones combined to the product's maximum power
Peak Power:	5 kW peak
Environment:	-35 to +55°C ambient, IP67
Surface Temp:	+65°C max. per IEC 60950†
Impedance:	50Ω nom.
Housing Finish:	Black anodized aluminum
Connector:	Triplate finish
Weight, nom:	0.80 lb., 363 g



Note: Specifications are subject to change without prior notification.

31JAN2017