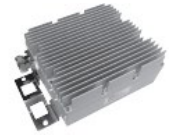


Attenuator



Xx means power value

- Low PIM and return loss
- cover 698-2700MHz

Electrical Specifications

Model Name N	XMAT072706NFNFxxx1X	XMAT072710NFNFxxx1X	XMAT072715NFNFxxx1X
Model Name 7-16	XMAT072706DFDFxxx1X	XMAT072710DFDFxxx1X	XMAT072715DFDFxxx1X
Model Name 4.3-10	XMAT072706QFQFxxx1X	XMAT072710QFQFxxx1X	XMAT072715QFQFxxx1X
Attenuation Value (dB)	6	10	15
Attenuation Tolerance (dB)	±1.0	±1.0	±1.0
Model Name N	XMAT072720NFNFxxx1X	XMAT072730NFNFxxx1X	
Model Name 7-16	XMAT072720DFDFxxx1X	XMAT072730DFDFxxx1X	
Model Name 4.3-10	XMAT072720QFQFxxx1X	XMAT072730QFQFxxx1X	
Attenuation Value (dB)	20	30	
Attenuation Tolerance (dB)	±1.0	±1.3	
Frequency Range (MHz)	698-2700		
Return Loss (dB)	≥19		
PIM3 (@2x43 dBm Carrier) (dBc)	≤-160		
Input Power (W)	25 W OR 50W OR 100W OR 200W		
Impedance (Ω)	50		

Mechanical Specifications

Dimensions, HxWxD (excluding connectors and mounting bracket) (mm) / (in)	176x151x96 / 6.9x5.9x3.8
Weight (including connectors) (kg) / (lb)	4.1 / 9.0
Connector Type	7/16 DIN-Female/Male or N-Female/Male or 4.3-10 Female/Male (Optional)
Color	Light Gray
Operational Temperature (°C)	-40 to +65
Operational Humidity (%)	≤95
Ingress Protection Class	IP65(Indoor and Outdoor)

Outline Drawing

